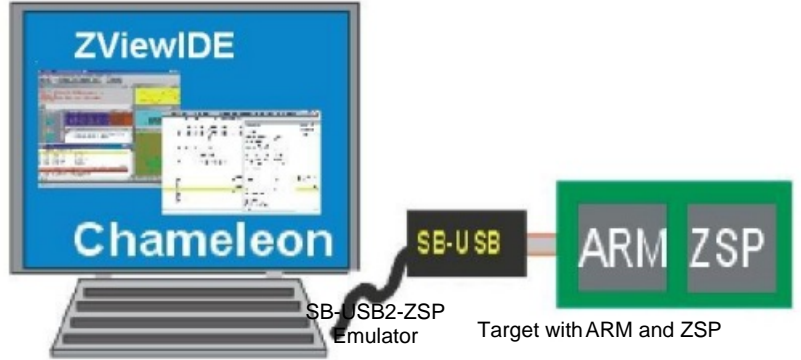


ZSP/ARM Development System

Debug Multiple CPUs on a Single JTAG Scan Chain



PC with ZViewIDE, ZServer, Chameleon.

Package Contents:

- SB-USB2-ZSP Emulator
- ZSP-QUAD-JTAG Adapter
- Signum System's Chameleon Debugger

*Requires VeriSilicon's ZViewIDE

Overview:

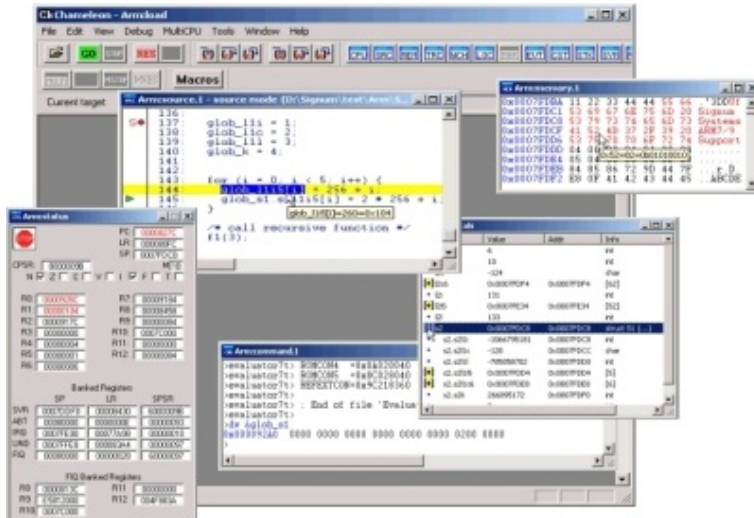
The ZSP/ARM development system is your interface to embedded project development from CPU evaluation to production testing. Support different CPUs and DSPs (including ARM and ZSP) in plain or multi-core(SoC) targets through one package!

This multi-core development environment provides a debug interface running on a PC host connected to an emulator, which communicates with the ZSP/ARM targets. The package provides Signum System's Chameleon Debugger for ARM and Domain Technologies: SB-USB2-ZSP emulator and ZSP-Quad-JTAG adapter. It utilizes VeriSilicon's ZViewIDE and ZServer connectivity software. This multi-core/device development capability allows the user to start/stop/single-step selected devices simultaneously and independently. Access to multiple devices is provided from single or multiple workstations via TCP/IP connection.

Chameleon Debugger for ARM by Signum Systems

Chameleon Features:

- Hardware and Software Breakpoints
- Step Into, Out, and Over
- Macro Script Language
- Virtual I/O
- Real-TimeTrace(ETM)
- Flash Programming Utilities
- Registers and Peripherals Access



Regardless of the number of CPUs being debugged, Chameleon offers the latest in debugger features: fly-over variable watch, drag and drop variables, virtual I/O, real-time DCC channel support, complex variable implode and explode, script language for automatic testing, symbol browsing, ETM trace display window, MMU and cache support, and much more. Step-into, Step-out and Step-over modes are supported for both C and assembly levels. The Flash programming plug-in allows easy programming of any on-chip or off-chip Flash memory. Chameleon's unique graphical interface is quick, intuitive and incredibly easy to use.

Development and Debug Tools

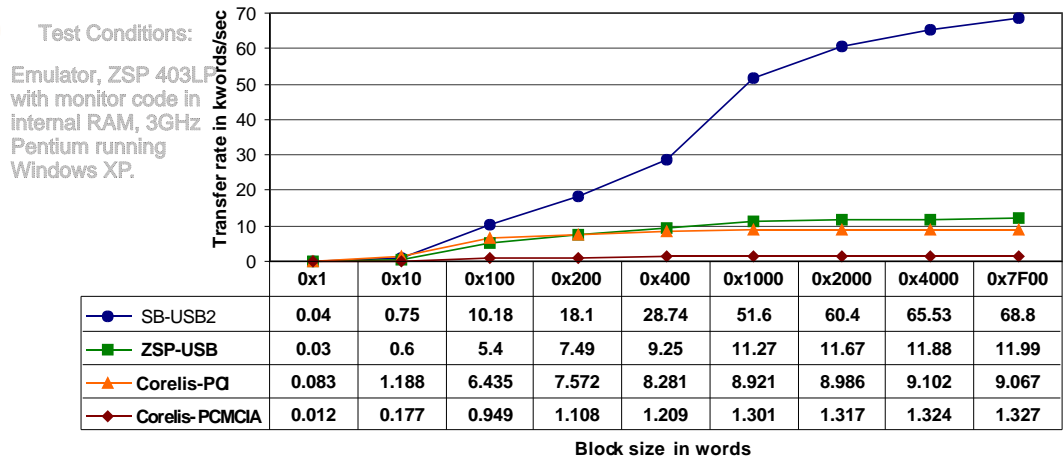


SB-USB2-ZSP Probe Features:

- Powered by USB port
- JTAG interface
- Integrates with:
 - ZView IDE
 - ZSP Console GDB

SB-USB2-ZSP: Fast JTAG Probe for ZSP Debugging

The SB-USB2-ZSP emulator enables efficient and productive embedded software debugging. This compact and portable probe utilizes the JTAG interfaces for debug and in-circuit testing supplied with the VeriSilicon ZSP cores. Unlimited software breakpoints within all ranges of program memory implemented in RAM are supported. Upload and download rates are up to 5 times faster than comparable products:



ZSP-QUAD-JTAG Features:

- 20 pin ARM cable
- 2 14x14 ribbon cables
- 2 14x10 ribbon cables featuring separate single pin and reset control connector



ZSP-QUAD-JTAG Adaptor: Daisy-chain Devices

Utilize the handy ZSP-QUAD-JTAG adaptor when daisy-chaining multiple devices requiring simultaneous control. The ZViewIDE debugger allows each connected board's ZSP to run / halt / single step synchronously. In addition, non-ZSP JTAG devices can be included in the scan chain; use ZViewIDE's boundary scan operation to observe the states of individual pins.