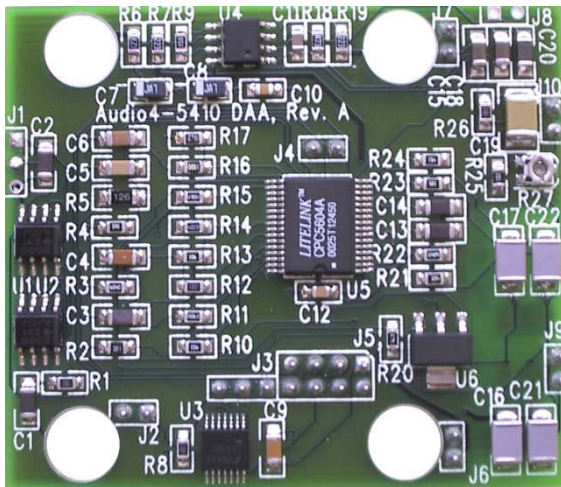


# ETA-A5410

## Experimental Telephony Adaptor for the AUDIO4-5410



### Description

The ETA-A5410 is a small 2.4" X 2.1" experimental telephony adaptor which can be installed directly onto existing daughter card receptacles located on the AUDIO4-5410 mother board.

The ETA-A5410 comprises an optically isolated (transformerless) DAA and essentially re-configures the AUDIO4-5410 circuitry to provide the following functions:

1. Phone line simulator interface through AUDIO4-5410 Channel B (right) input (note: an audio cable with mini audio jack on one end, and RJ-11 connector on the other, is provided with the ETA-A5410 adaptor);
2. Line side Tip and Ring diode bridge;
3. DSP-side Off Hook control via the DSP's FSR output;
4. DSP-side Ring detection via the DSP's Interrupt2 and DR inputs;
5. DSP-side Caller ID detection via the DSP's FSX input;
6. CODEC A is disabled to free up control signals for use with the DAA;
7. CODEC B (right RX input) receives A/C coupled audio output from the DAA;
8. CODEC B (right TX output) is A/C coupled to the DAA audio input;
9. Buffers and biases microphone via Left Channel B audio jack and patches signal into CODEC B left channel audio input;
10. Buffers and routes CODEC B right channel audio output to headphone right channel; and
11. Buffers and routes CODEC B, left channel audio output to headphone left channel.

#### DISCLAIMER:

Please note that the ETA-A5410, described herein, is for experimental use with appropriate laboratory grade telephone line simulators only. Connection to federally regulated telephone company (TELCO) phone lines or equipment is a misapplication of this product and is explicitly not authorized.

Domain Technologies, Inc. does not warrant that the ETA-A5410 is fit for any purpose or application and hereby disclaims any liability arising out of any use or misapplication.