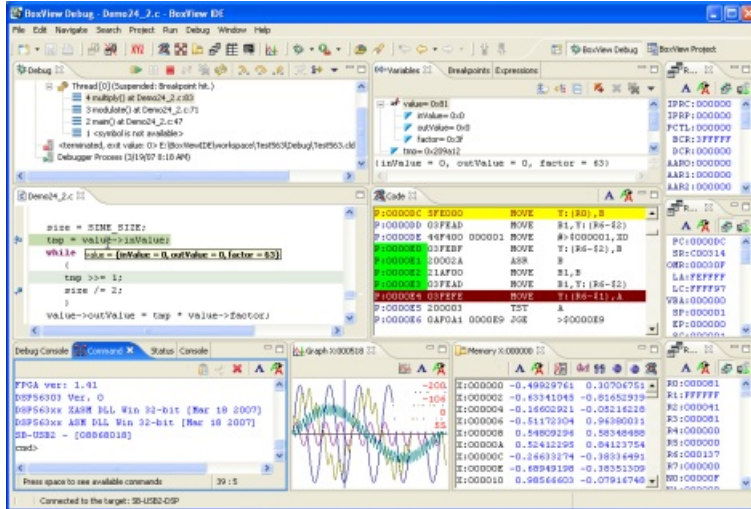


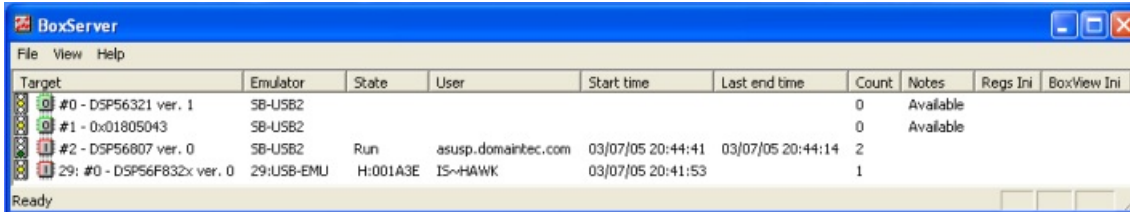


# Solving Complex Debugging Problems



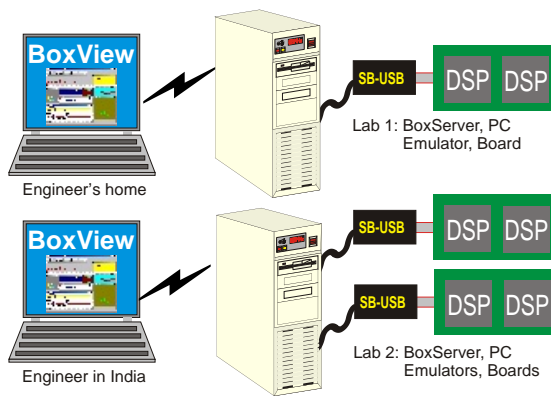
## BoxView IDE: Control and Interact with Your DSPs

All Domain Technologies' emulators are compatible with BoxView IDE, our high level language, embedded processor target debugger as part of the Eclipse software development environment. The Eclipse platform is an open, industry supported, extensible, software development platform. Developers can create, test and debug applications with fast data access and extensive display capabilities. BoxView's visual user interface includes different numeric formats and graphical plots.



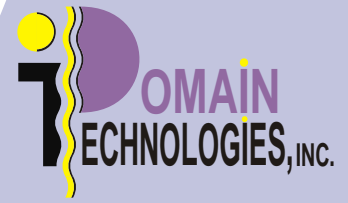
## BoxServer™: Multi-DSP and Multi-User Debug Access

More complex configurations such as debugging with multiple users, multiple DSP targets, or remote access are all supported seamlessly with the addition of our BoxServer™ software. This multi-core, multi-device development capability allows the user to start/stop/single-step selected devices simultaneously. Access to multiple devices is provided from single or multiple workstations via TCP/IP connection.



## Solution for Multiple Remote Users, Multiple Boards

BoxView with BoxServer solve the problem of control when two engineers need access to multiple DSPs. Each engineer, individually uses BoxView for debugging. Remote access for each debug session, via TCP/IP, is managed by BoxServer. In addition, BoxServer controls multiple emulators.



## BoxView IDE Features:

- Project Management:
  - Project Dependencies
  - File Compile Options
  - Timesaving Edits
  - CVS/SVN
- Project Debugger:
  - Mix Source Views
  - Multiple Data Views
  - Fast Data Access
  - Graphical Plots
  - Formatted Memory
  - Peripheral Registers
- Supported Processors:
  - Freescale DSP 56K
  - Si Labs MCUs
  - Actel Core8051
  - Silicon Laude SL8051
- Compiler/Linker:
  - SDCC(8051) Tool Chain
  - Freescale DSP 56K Tool Chain

## BoxServer Features:

- Scalable and Flexible
  - Single User, Single DSP
  - Multiple Users and DSPs
- Conveniently Accessed
  - Direct Connect
  - Remote via TCP/IP

Domain Technologies, Inc.  
 811 East Plano Pkwy, Suite 115  
 Plano, TX 75074  
 Tel.: +1.972.578.1121  
 Fax: +1.972.578.1086  
 E-mail: info@domaintec.com  
 Web: http://www.domaintec.com