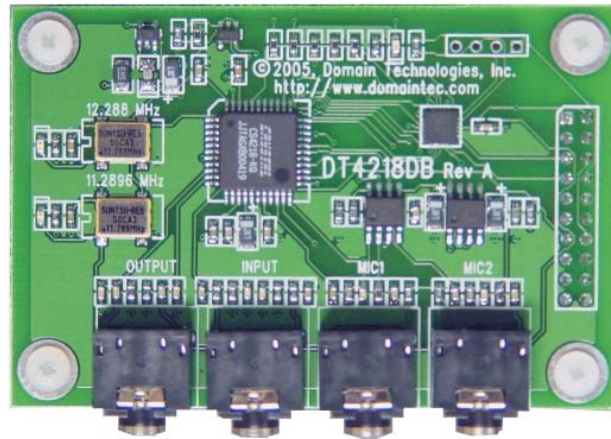


## DT4218DB- Audio Daughterboard

### 2 Channel Audio Support for ZSP Boards



#### Key Features:

- Dimensions: 2"x3"
- 16-bit Stereo Audio Codec
- Delta-Sigma A/D and D/A converters
- Stereo Line Out
- Stereo Line In
- Dual MIC In

#### Sampling Rates:

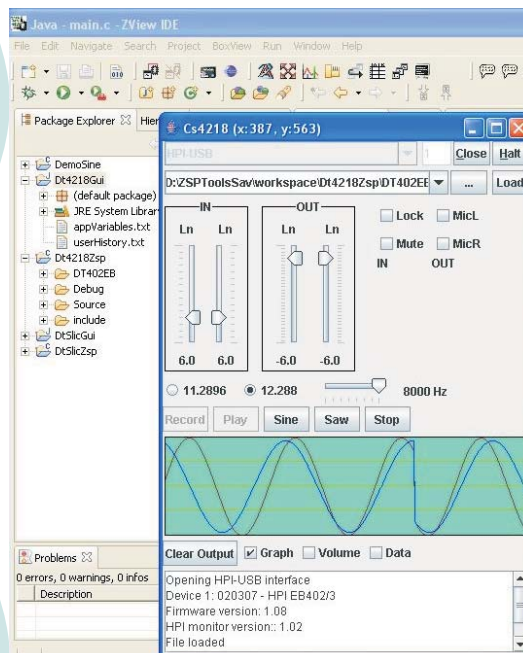
- 48 kHz - 8 kHz
- 44.1 kHz - 7.35 kHz

#### Overview

Enhance your ZSP based product development and testing using this audio daughterboard. The compact DT4218DB creates a 2 channel audio test system by providing stereo audio input and output to any ZSP board with a SPORT serial connector, such as the DT402EB or the EB403LC.

#### Product Description:

The board features Cirrus Logic Cs4218 16-bit stereo Delta-Sigma Codec. With two external clock sources, it supports sampling rates of 48 - 8kHz and 44.1 - 7.35 kHz. It features stereo line level output and user selectable option of stereo line level input or dual microphone. The microphone circuit supports electret microphones with bias voltage and pre-amp module.



#### Demo Software

Utilize the demo software, sources included, to test the CS4218 chip on the DT4218DB audio daughterboard. The Graphical user interface of the demo monitors incoming waveforms and displays their amplitude values.

# Development and Debug Tools

## ZSP-USB-JTAG, SB-USB2-ZSP Probe Features:

- Powered by USB port
- JTAG interface
- Integrates with:
  - ZSP Console GDB
  - ZViewIDE



### ZSP-USB-JTAG: JTAG Probe for ZSP Debugging

Both compact and portable, the ZSP-USB-JTAG emulator is designed to support software development on the VeriSilicon ZSP cores via a host PC USB port. In addition, the emulator supports multi-core and multi-user debugging on a network over a TCP/IP connection, as well as JTAG boundary scan operations such as testing and flash memory programming, with available software.

The ZSP-USB-JTAG emulator is powered from the USB connection, which eliminates the need for a separate power supply and also making it ideal for use with notebook computers.

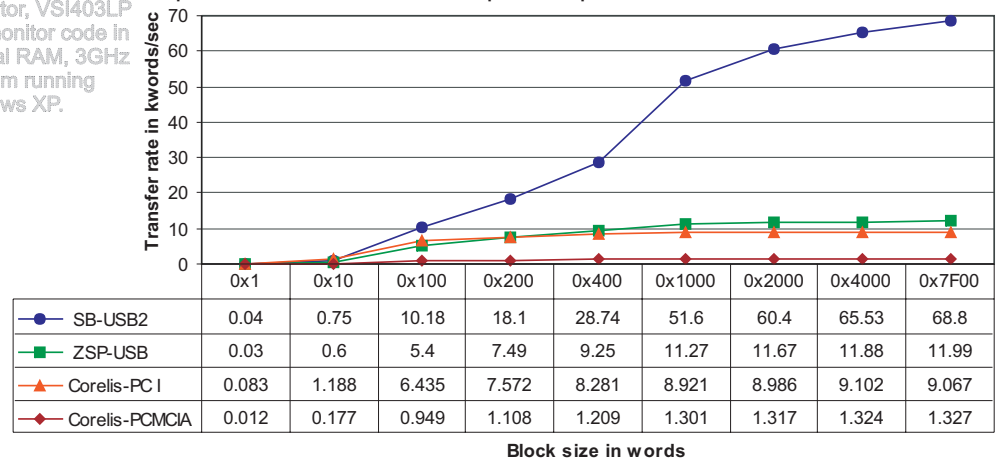


### SB-USB2-ZSP: Fast JTAG Probe for ZSP Debugging

The SB-USB2-ZSP emulator enables efficient and productive embedded software debugging. This compact and portable probe utilizes the JTAG interfaces for debug and in-circuit testing supplied with the VeriSilicon ZSP cores. Unlimited software breakpoints

within all ranges of program memory implemented in RAM are supported. Upload and download rates are up to 5 times faster than comparable products:

Test Conditions:  
Emulator, VS1403LP  
with monitor code in  
internal RAM, 3GHz  
Pentium running  
Windows XP.



### ZSP-QUAD-JTAG Adapter: Daisy-chain Devices

Utilize the handy ZSP-QUAD-JTAG adapter when daisy-chaining multiple devices requiring simultaneous control. The ZViewIDE debugger allows each connected board's ZSP to run / halt / single step synchronously. In addition, non-ZSP JTAG

devices can be included in the scan chain; use ZViewIDE's boundary scan operation to observe the states of individual pins.